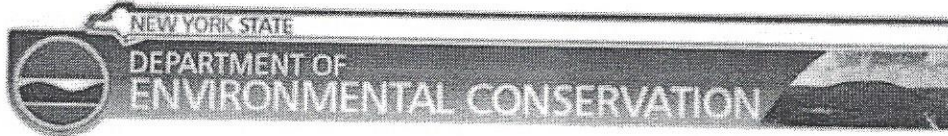


**ATTACHMENT A**  
**PROJECT DOCUMENTATION**



# New York State Inventory of Dams

Name of Dam: Piseco Lake Outlet Dam

State ID: 156-0615

Hazard Code: A

See below for hazard code definition

Year Completed: 1888

Most Recent Inspection: 7/7/2003

## Location Information:

County	Municipality	River or Stream	Latitude	Longitude
Hamilton	Not Found	PISECO OUTLET	43° 23' 12.0" N	74° 32' 42.0" W

## Type:

Type of Construction	Purpose
CN - Concrete Gravity	Recreation

## Technical Information:

Federal ID Number	NY01186
Dam Length (feet)	65
Dam Height (feet)	6
Spillway Width (feet)	50
Maximum Discharge (cubic feet per second)	Unknown
Maximum Storage (acre- feet)	164836
Normal Storage (acre- feet)	164836
Reservoir Surface Area (acres)	2842
Drainage Area (square miles)	59.41
Basin	UPPER HUDSON

**Date of Data Update**

7/6/2009

**Note** -- The Hazard Code denotes the downstream hazard potential in the event of a dam failure:

**C** = High Hazard

**B** = Intermediate Hazard

**A** = Low Hazard

**0** = Null; No hazard code assigned

**Also Note** -- This data was exported from DEC's database on 04/28/14.  
Updates to data that occurred after 04/28/14 are not reflected here.

See [more information](#) about the New York State Inventory of Dams data set

---

[NYS DEC Homepage](#)

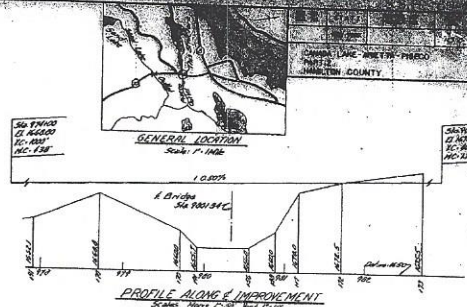
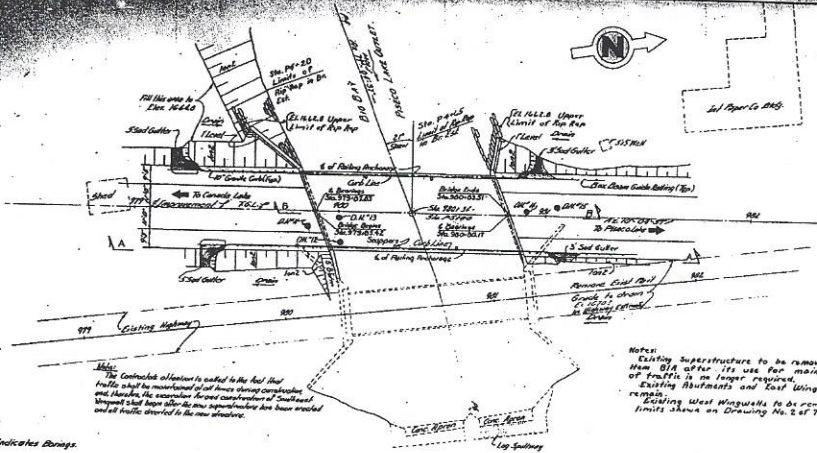
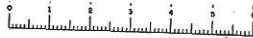
Directions: [To here](#) - [From here](#)



dam

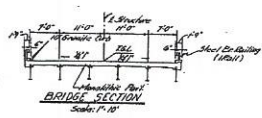
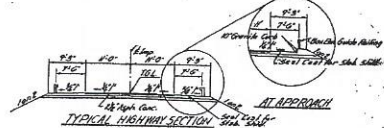
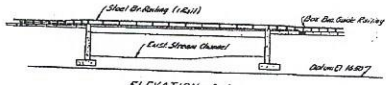
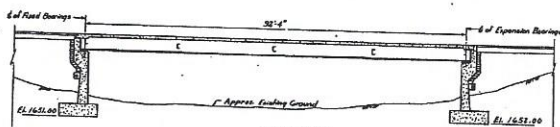






**Notes:**  
 Existing Superstructure to be removed under  
 Item B/A after its use for main structure  
 of Profile in its larger portion.  
 Existing Abutments and Trestle Wings to  
 remain West Wing to be removed to the  
 limits shown on Drawing No. 2 of 7.

Indicates Storage.



For General Notes and Estimate of  
 Quantities see "General Bridge Notes"  
 Dup. 11 of 1.  
 For various superstructure details see  
 "Bridge Details Sheet" Dup. 1 of 4.  
 For joint details of business and for  
 working details see "Bridge Details  
 Sheet" Dup. 2 of 4.  
 For drainage details of bridge approaches  
 and for stone curb details see "Bridge Details  
 Sheet" Dup. 3 of 4.  
 For bridge railing and railing anchorage  
 details see "Bridge Details Sheet" Dup. 4 of 4.  
 For design purposes the foundation pressure  
 does not exceed 40 lbs. per square foot.

PROJECT ENGINEER: M. J. Delaney  
 IN CHARGE OF: E. E. ...  
 DRAWING BY: A. ...  
 CHECKED BY: A. ...  
 DESIGNED BY: M. ...  
 SUPERVISOR BY: A. ...

BRIDGE NO. 3  
 OVER PISECO LAKE OUTLET  
 STA. 890+34  
 LAYOUT  
 DRAWING NO. 1 OF 7

**ATTACHMENT B**  
**INSPECTION PHOTOGRAPHS**



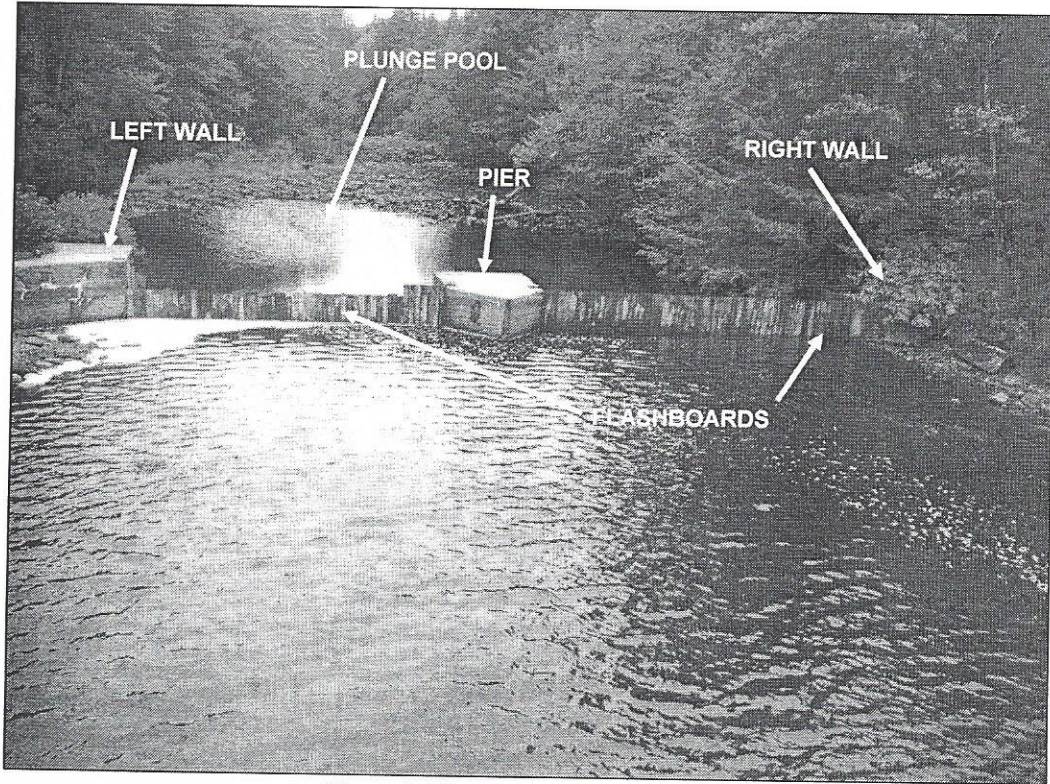


Photo 1. Upstream View of Dam.

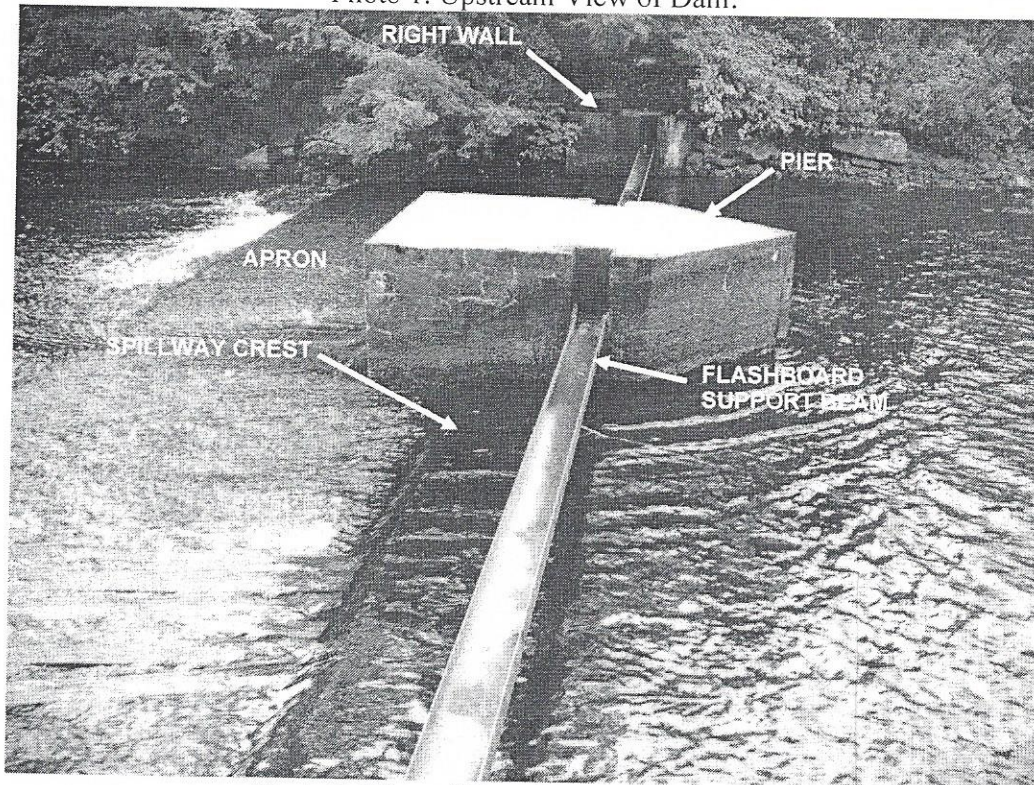


Photo 2. View of Dam from Left Abutment.



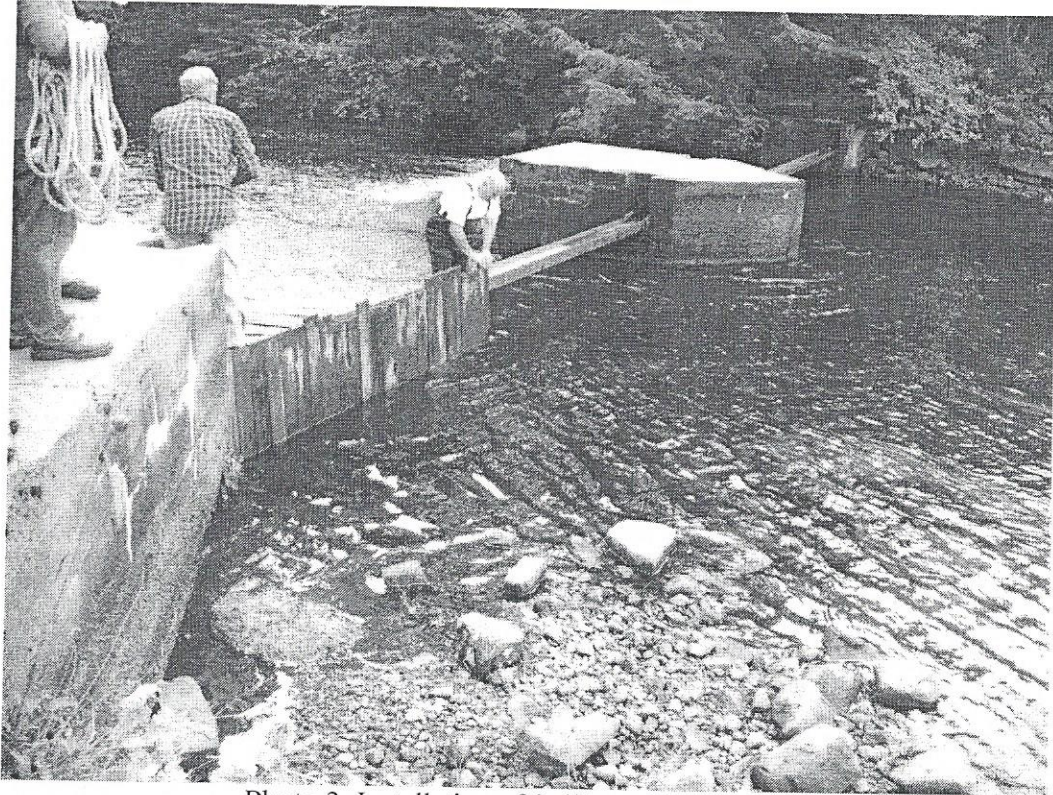


Photo 3. Installation of Spillway Flashboards.

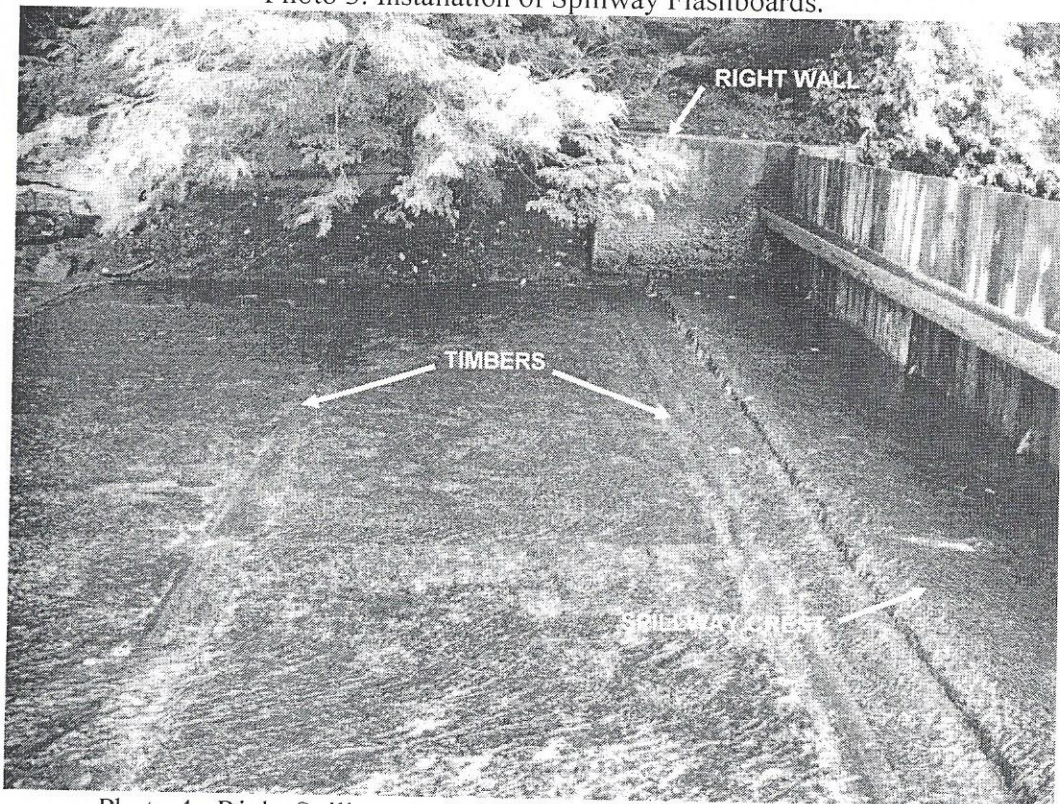


Photo 4. Right Spillway Bay Crest, Apron and Right Abutment Wall.



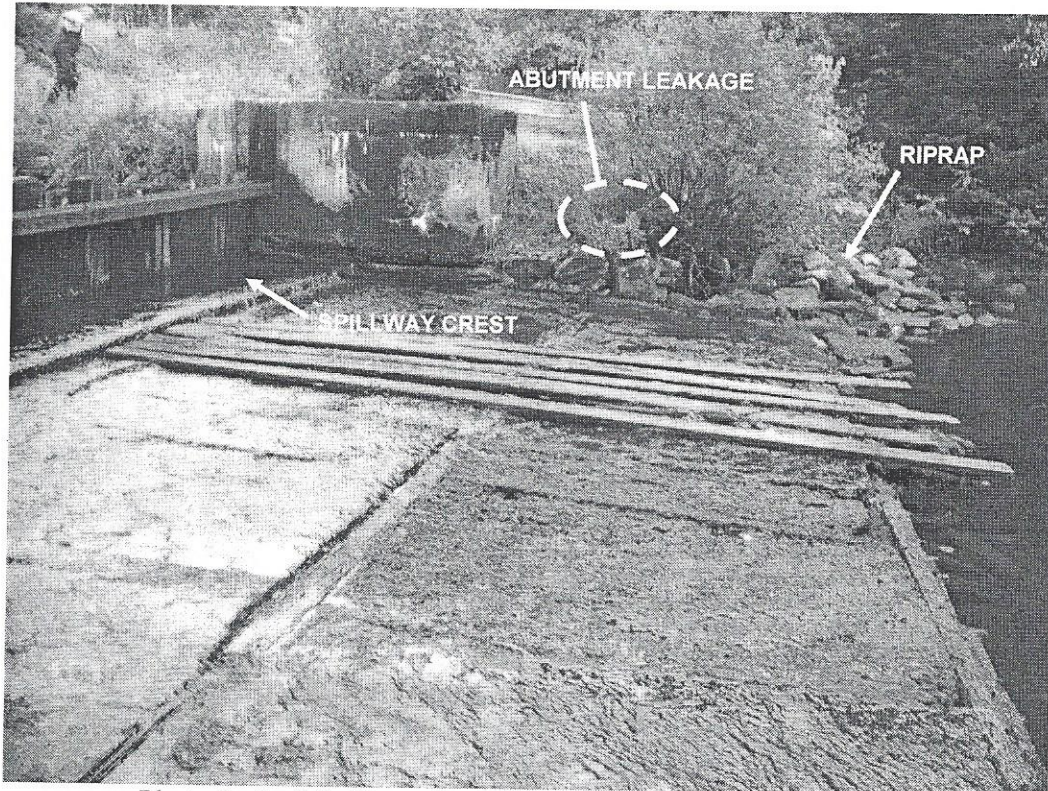


Photo 5. Left Spillway Bay: Crest, Apron and Abutment Wall.

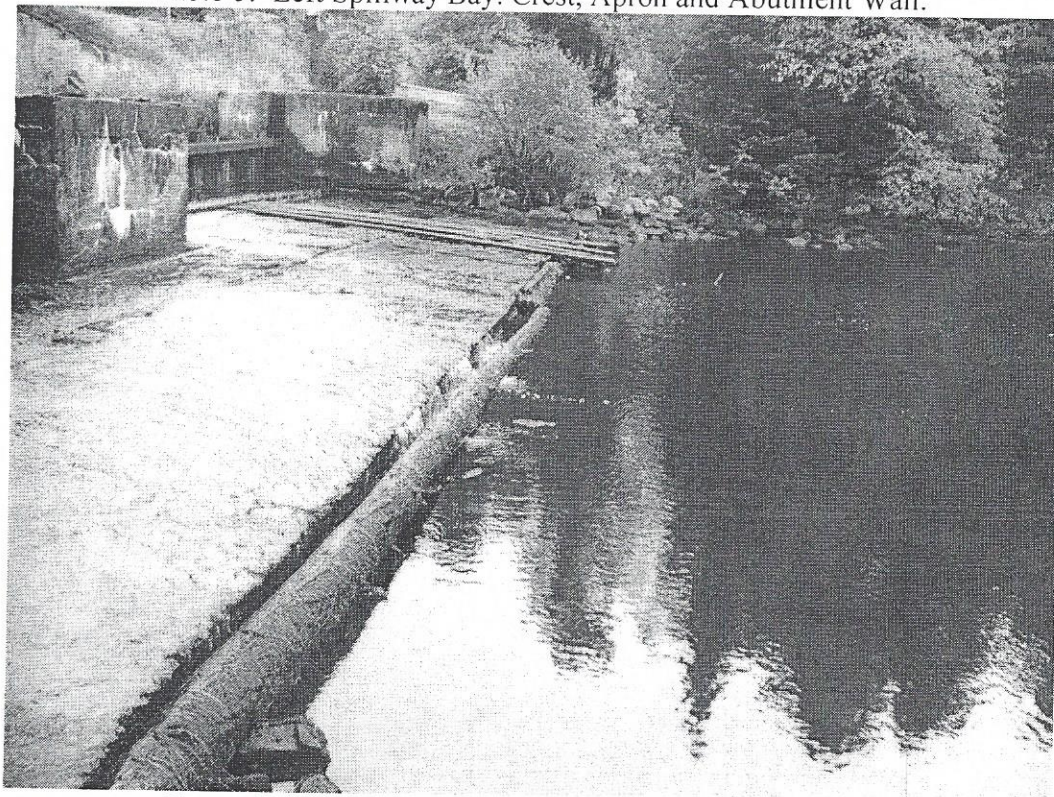


Photo 6. Separation of Protective Timber from Apron Toe.



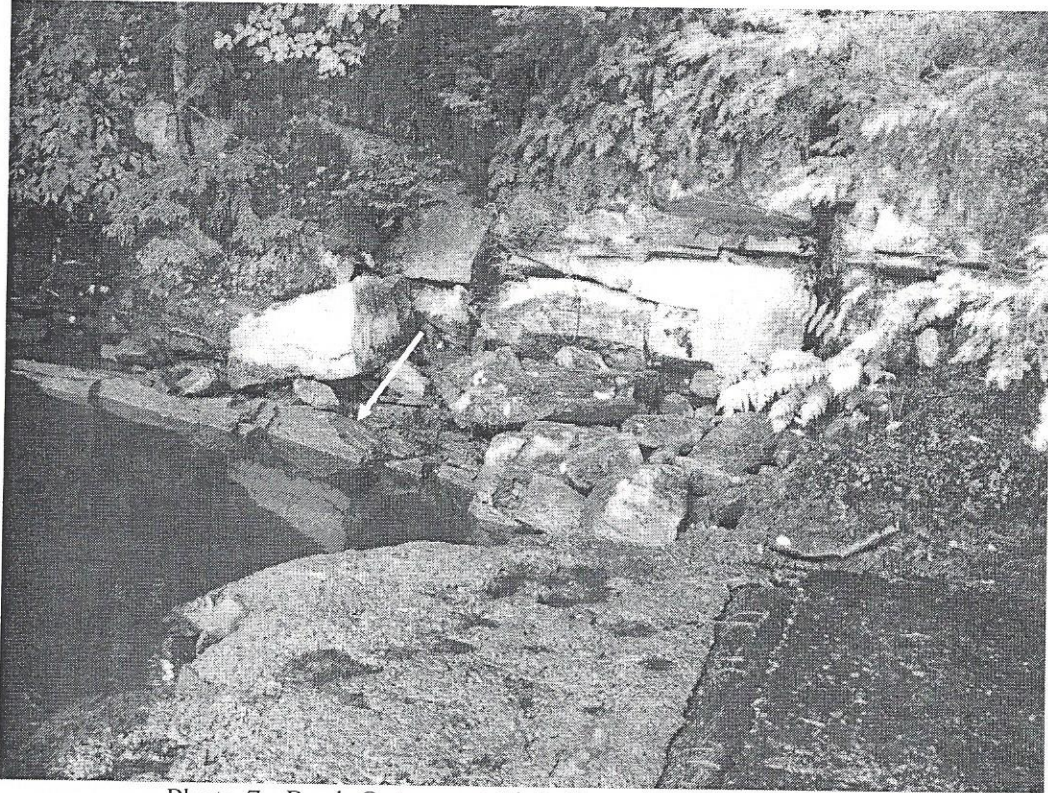


Photo 7. Rock Outcrop at Right Dam Abutment (Arrow).



Photo 8. Apron Slab Erosion in Left Spillway Bay.



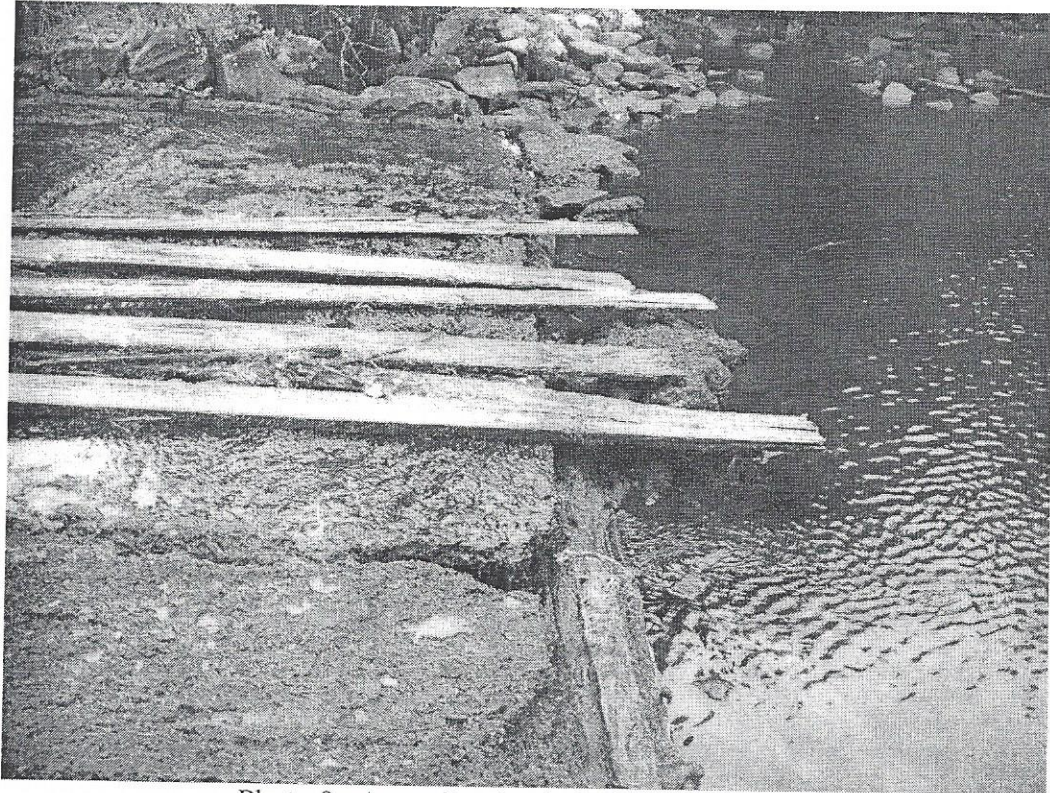


Photo 9. Apron Erosion in Left Spillway Bay.

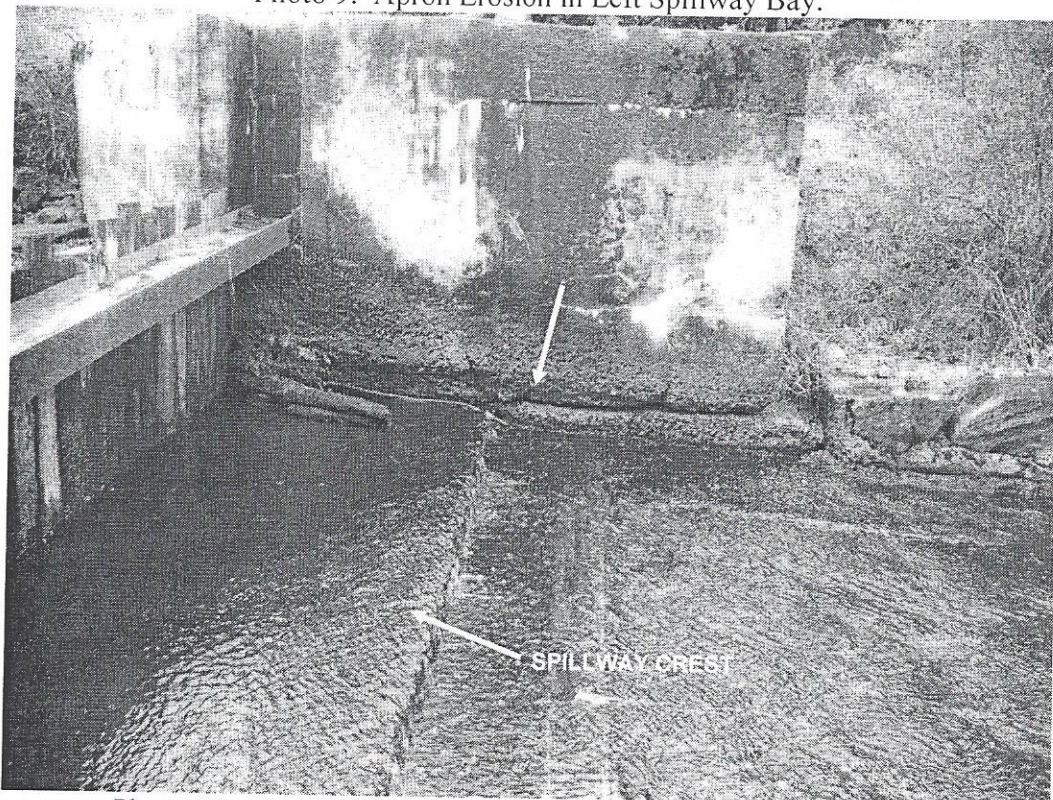


Photo 10. Left Abutment Wall Erosion and Undermining (Arrow).





Photo 11. Leakage in Left Abutment (Arrow).



Photo 12. Dam Construction Date Imprint on Top of Left Abutment Wall.